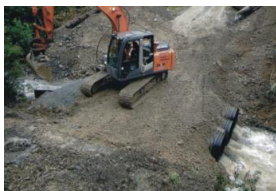


DATA SHEET FARMPIPE HDPE SN6 DN100-DN1000 FOR FOREST AND FARM



From the FOREST to the FARM, **INFRAPIPE FARMPIPE** is the ideal solution for culverting needs being a New Zealand made twinwall (corrugated) polymer pipe system. Utilising the latest manufacturing technology, INFRAPIPE FARMPIPE is made to SN6 stiffness rating under the AS/NZS 5065:2005 standard, ensuring its suitability for culverts. Supplied in 6 metre (approx.) lengths, INFRAPIPE FARMPIPE is chemically inert, very light, yet incredibly strong, and able to withstand high loads and severe impacts. It is specified in DN – which is the ID of the pipe (unlike some alternatives which are denominated by OD suggesting they are up to 36% bigger than they are– [see conversion table here](#)).



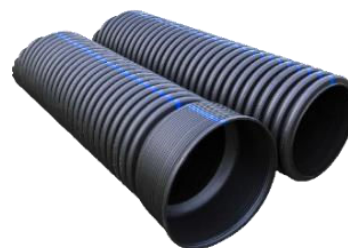
COVER for a logging truck on a haul road is 450mm.
For the forest, farm or garden you need FARMPIPE
– for the sealed road or council land CIVILPIPE.

Table 1 FARMPIPE DETAILS

DN	ID mm	Crate Quantity	Effective Length mm	Overall Length mm	OD mm	Weight (KG)
100	98	30	6413	6490	115	4
150	147	23	6348	6461	171	6
225	218	6	6283	6429	254	14
300	295	6	6188	6389	345	22
375	375	2	6183	6390	437	40
450	450	2	6123	6340	523	61
525	525	2	6041	6317	611	70
600	600	1	5920	6273	702	90
800	800	1	5936	6272	936	161
1000	1000	1	5892	6283	1166	258

LARGER PIPES, SLOTTING AND FLUMING

- INFRAPIPE can also supply pipes of inner diameters 700, 900, 1100, 1200, 1350, 1500, 1600, 1800, 2000, 2300, 2500 & 3200.
- Pipes can be slotted (and wrapped) for drainage.
- Fluming available DN300-1000.





STANDARDS



FEATURES & BENEFITS

- ✓ Quick to install.
- ✓ 17 times lighter (6%) than concrete.
- ✓ Stronger.
- ✓ No maintenance.
- ✓ Easy to modify or repair.
- ✓ 100-year life.
- ✓ Easy to freight.
- ✓ Completely recyclable.
- ✓ Best abrasion resistance.
- ✓ Best seismic resistance.
- ✓ Chemically inert.
- ✓ Biologically immune.

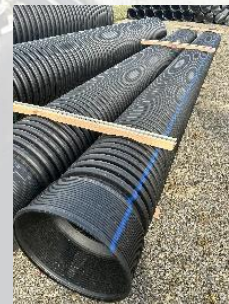


FARMPipe is lighter than concrete pipes. This makes the installation easier, safer and more efficient.

A concrete DN600 pipe is 260kg/m. FARMPipe DN600 is 15kg/m.

INSTALLATION

- FARMPipe is delivered crated in the quantities shown on Page 1 using scalloped timber as shown here.
- For forest deliveries it can be supplied belly-strapped as one truck load.
- [Infrapipe has a detailed document on Loading, Handling & Storing these products.](#)
- Infrapipe has a detailed document on [Inspection on Delivery.](#)
- For details on how to care for INFRAPIPE FARMPipe read [Infrapipes Guide to Maintaining your warranty.](#)
- INSTALLATION is in accordance with [this installation guide.](#)
- FARMPipe is joined using the integrated socket and spigot with the matching rubber ring (supplied separately).
- Short (half) lengths are available for installations with trench shields.
- Trench design is covered in [this installation guide.](#)
- Minimum cover Heights in mm using engineered fill are as per [Table 2](#) below:



INSTALLATION MANUAL:



Loading condition	mm	Loading condition	mm
Land zoned for agricultural use	600	Vehicle load no carriageway	450
In embankments or construction eqpt loads	750	Not subject to vehicles	300

For situations outside the above or depths of 6m+, contact INFRAPIPE for an engineered solution

More detail can be found in AS/NZS 2566.1:1998 *Buried Flexible Pipelines: Structural design* and AS/NZS 2566.2:2002 *Buried flexible pipelines – Installation.*



FITTINGS

The FARMPIPE range is supported with bends, joins and other stock fittings in the 225-600 diameters. For other requirements or other diameters contact INFRAPIPE for a customised solution.

CODES

Contact INFRAPIPE sales@infrapipe.co.nz for more information on these pipe requirements:

- For pipes of inner diameters.
700,900,1100,1200,1350,1500,1600,1800,2000,2300,2500 & 3200.
- For SN ratings above SN6.
- For manholes, pump chambers, wetwells and other structures.
- For INFRATANK tanks 4m³ to 1000m³+



Table 3 FARMPIPE Codes

DN	FARMPIPE Code	Rubber ring code
100	TW6.100.6	TWR.100
150	TW6.150.6	TWR.150
225	TW6.225.6	TWR.225
300	TW6.300.6	TWR.300
375	TW6.375.6	TWR.375
450	TW6.450.6	TWR.450
525	TW6.525.6	TWR.525
600	TW6.600.6	TWR.600
800	TW6.800.6	
1000	TW6.1000.6	



INFRAPIPETM Rural/Forestry Culvert Pipes are designed and manufactured to produce **zero toxic leaching**.



WE ALSO MAKE

